



DON MARIANO MARCOS MEMORIAL STATE UNIVERSITY

ANNUAL REPORT

SY 2018-2019



July 31, 2019

President Rodrigo Roa Duterte
Republic of the Philippines

Through **Honorable J. Prospero E. De Vera III**
Chairperson, DMMSU Board of Regents
Chairperson, Commission on Higher Education

Dear President Duterte:


I am pleased to submit to you the Annual Report of Don Mariano Marcos Memorial State University, La Union, for the School Year 2018-2019.

The presentation in this report is based on my 11-point agenda as President of the University. These agenda are coined into I LOVE DMMSU which are as follows:

- I** for institutional quality and program excellence,
- L** for laudable academic programs,
- O** for operational and scientific research program,
- V** for vibrant extension and community development programs,
- E** for efficient and effective resource generation,
- D** for dynamic faculty and staff development,
- M** for meaningful student services and development,
- M** for manifold physical resource and development,
- M** for more responsive management and governance,
- S** for sustained linkages and collaboration, and
- U** for unified, strong, collaborative and supportive alumni.

We vow to make more impactful contributions to our country's national development.

Sipupudno,


JAIME I. MANUEL, JR.
President, DMMSU

CONTENTS AND EXECUTIVE SUMMARY

Institutional quality and program excellence

Seventy-three percent (73%) of DMMMSU's academic programs are accredited. Seven (7) are Reaccredited Level IV. DMMMSU has 5 Centers of Development. As a proof of DMMMSU's excellent program offerings, a total of 34,478 students were enrolled during the first semester, second semester, and mid-year term. Graduates during the first semester, second semester, and midyear term totalled to 4,386.

4

Efficient and effective resource generation

To maximize the utilization of resources in order to increase productivity, plans on the development of Alipang, the Central Administration at Raois Farm, and Fisheries Research and Training Institute (FRTI) into Agri-Eco Tourism Center have already been crafted. Also, Php17,171,941.45 pesos was outsourced and Php133,535,015.72 pesos was internally generated.

14

Laudable academic programs

All programs offered are compliant with CHED's policies, standards, and guidelines. New general education courses are fully implemented. 100 percent of undergraduate programs are outcomes based compliant. Five new programs are offered. In addition, DMMMSU records impressive performance of its graduates in the licensure examinations.

6

Dynamic faculty and staff development

Of the 709 faculty members, 44 are Professors, 109 are Associate Professors, 147 are Assistant Professors, and 409 are instructors. Moreover, 168 hold PhD degrees, 361 hold MA/MS degrees, and 180 hold BS/BA degrees. From the Faculty and Staff Development, 16 full-time scholars and 4 partial scholars were approved. CHED sponsored 120 scholars, and DOST sponsored 8. DMMMSU also has 511 non-teaching staff, 488 are regular, and 23 are casual. DMMMSU also supported faculty members and staff in their attendance to 24 international trainings seminars and 155 in the national level.

18

Operational and scientific research program

Two-hundred fifty-four (254) faculty members were involved in the conduct of research. Fifty-four (54) researches were completed, 253 are ongoing. Among the completed researches, 14 research outputs are being utilized by the industry and by other beneficiaries. Sixty-one (61) researches were presented in the international, national, and regional fora. DMMMSU keeps 32 intellectual property registrations.

11

Meaningful student services and development

DMMMSU had a total of 16,167 government and private sponsored scholars. It provides for quality facilities and activities for its students' holistic development.

22

Vibrant extension and community development programs

DMMMSU has 90 active partnerships. It offered 164 trainings and served 10,503 beneficiaries.

13

Manifold physical resources and development

DMMMSU has started with the transfer and titling of land properties and the enactment of Campus Comprehensive Land Use Plan. To accomplish this, the Land Transfer and Titling Office was created. In addition, we wanted to further advance the teaching and learning environment. To realize this, 10M pesos was allotted for NLUC Library, 8M for the repair of SLUC Library, and 3M for MLUC Library. Moreover, DMMMSU has already established 100 percent campus interconnectivity. DMMMSU free WiFi which is open to all students has been established in the main campuses.

26

More responsive management and governance

29

To empower operating units and guarantee more participatory management and consultative decision-making, the organization structure was reviewed and rationalized; hence, we now have the Revised Organization Structure with BOR No. 2019-481, which was approved on March 25, 2019. In addition, DMMMSU carried out various climate mitigation activities.

Sustained linkages and collaboration

31

Twenty-six (26) students were enrolled in the various programs of DMMMSU's Open University System. One hundred twenty-four (124) students were sent to various partner Higher Education institutions abroad. Forty-five (45) inbound students were accommodated. Ten (10) Grade 10 students were accommodated for International Training Cum Cultural/Heritage Tour. Seven (7) faculty members were sent for research and academic exchange abroad. Twenty bilateral agreements with partners abroad were forged.

Unified, strong, collaborative and supportive alumni

34

DMMMSU has strengthened the alumni relations through a functional Alumni Relations Office; drafted the Alumni Relations Office Operations Manual; conducted alumni homecoming activities in campuses and colleges; traced 50 percent of its alumni; and started collaborating with Jobs180.com to create a university alumni portal.

Board of Regents

35

University Officials

36

DMMMSU Hymn

37

INSTITUTIONAL QUALITY AND PROGRAM EXCELLENCE

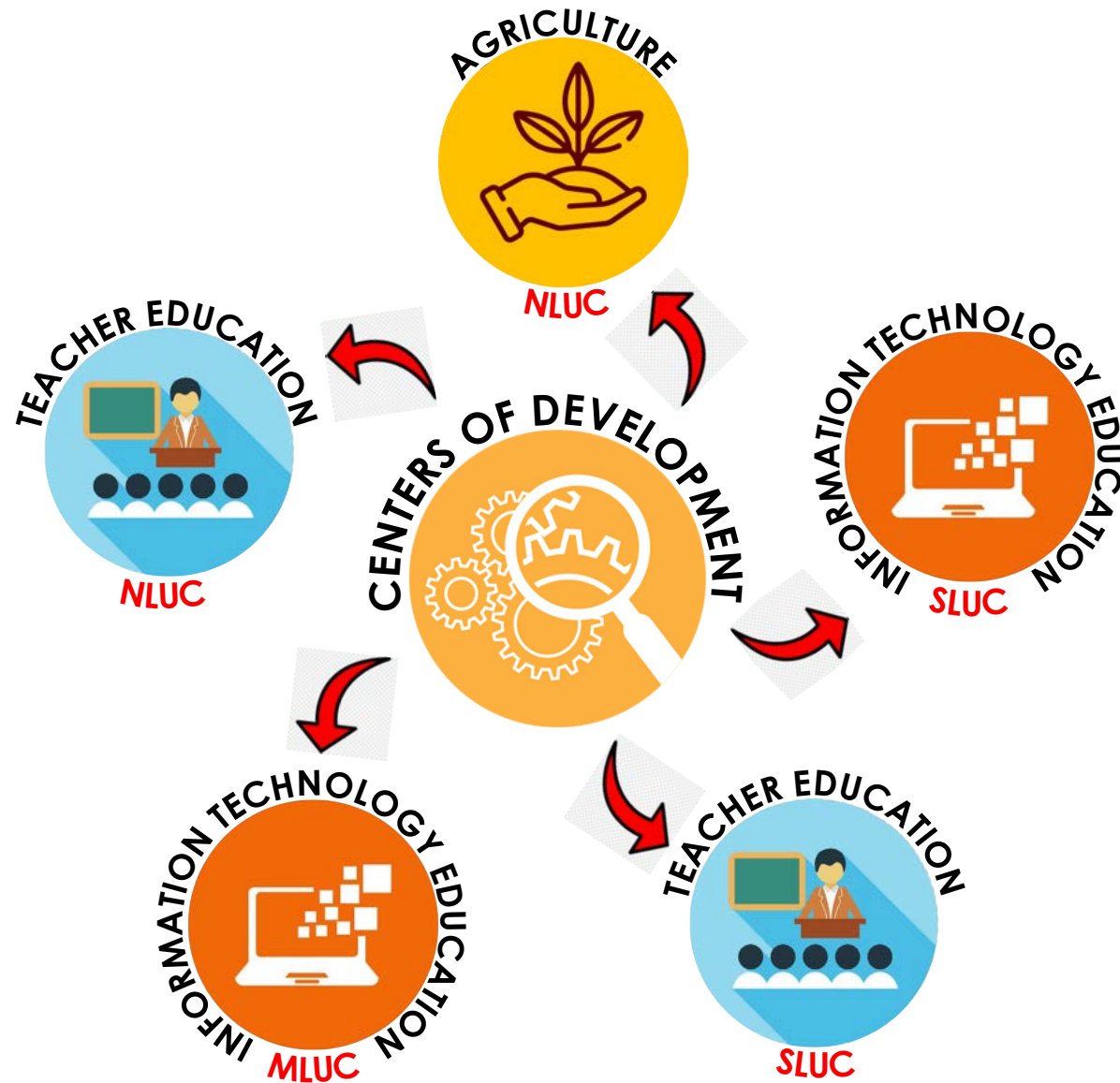
DMMMSU works hard to maintain quality and excellence in its programs. As a result, 73 percent of our programs are accredited.

Campus	Number of Programs	Number of Accreditable Program	Level I	Level II	Level III	Level IV	Total Accreditable Programs
NLUC	30	30	10	4	5	3	22
MLUC	29	28	3	5	12	3	23
SLUC	30	27	1	7	13	1	22
OUS	7	7	-	-	-	-	-
Total	96	92	14	16	30	7	67/92 (73%)

Both NLUC and MLUC have three Programs Reaccredited Level IV. SLUC has one.

Level IV Reaccredited Programs	Campus
BS Industrial Technology	MLUC
PhD in Technology Education Management	MLUC
MA in Technology Education	MLUC
BS Agribusiness Management	NLUC
BS Agroforestry	NLUC
Bachelor of Elementary Education	NLUC
PhD Science Education	SLUC

Currently, we have 5 Centers of Development.

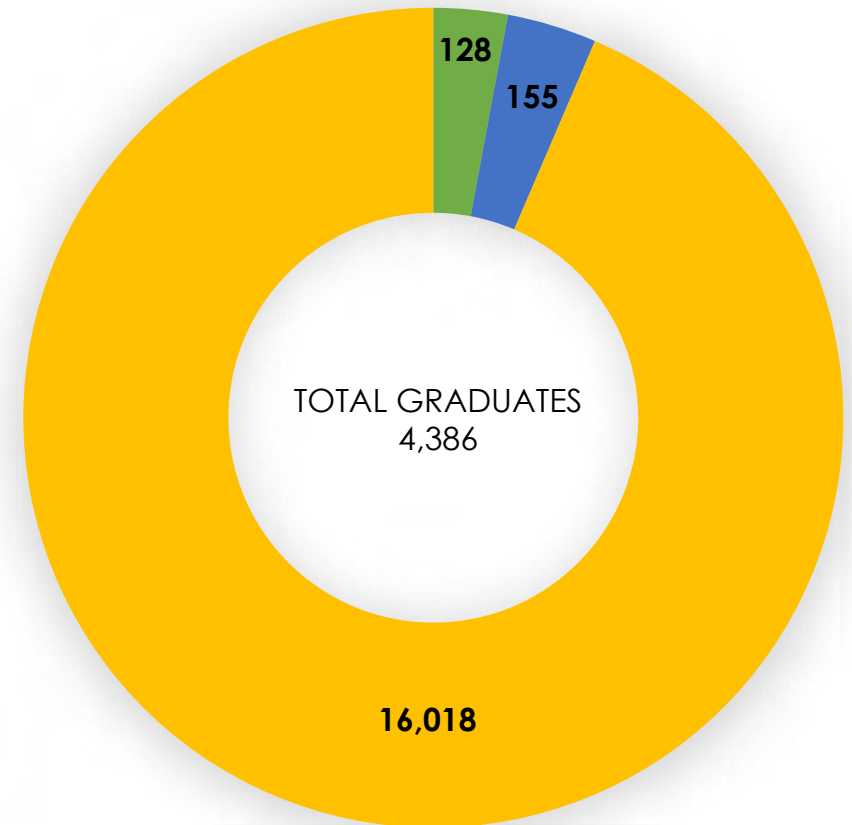
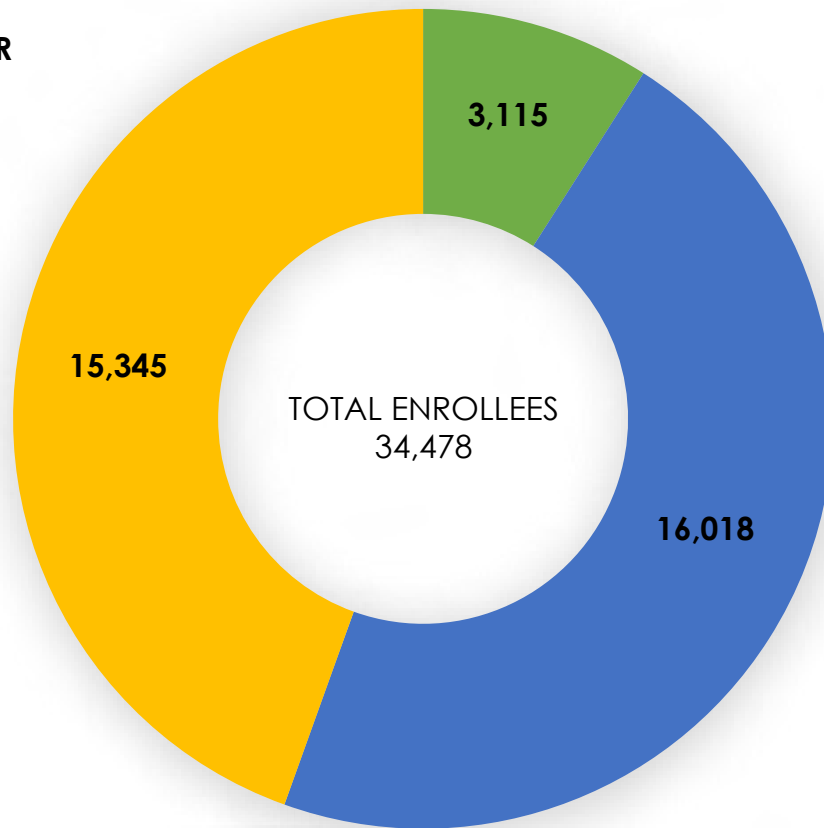


INSTITUTIONAL QUALITY AND PROGRAM EXCELLENCE

Below are 2018-2019 number of enrollees and graduates

LEGEND:

- SUMMER
- 1ST SEMESTER
- 2ND SEMESTER



For our second goal which is laudable academic programs, we ensure that our curricular offerings are relevant and that they meet international standards and address the needs of academic and industrial sectors.



**PROGRAMS ARE COMPLIANT WITH
POLICIES, STANDARDS, AND GUIDELINES**

**NEW GENERAL EDUCATION COURSES
ARE FULLY IMPLEMENTED**

**UNDERGRADUATE PROGRAMS ARE 100 %
OUTCOMES-BASED EDUCATION COMPLIANT**

LAUDABLE ACADEMIC PROGRAMS

In addition, we are now offering new programs to cater to various needs of the industry.

New Program Offering	Campus
Bachelor of Physical Education	NLUC
Bachelor of Technology and Livelihood Education	NLUC
Bachelor of Technical Vocational Teacher Education	MLUC
Bachelor of Early Childhood Education	SLUC
Bachelor of Special Needs Education	SLUC
Bachelor of Technology and Livelihood Education	SLUC
Bachelor of Culture and Arts Education	SLUC
Bachelor of Science Education	SLUC

We enhance board programs and target higher performance of graduates in the licensure examinations. As a result, we had five topnotchers in the licensure examinations.



IG HARLIKA G. LANGIT

6th Placer

Licensure Examination for Psychometricians, November 2018

Bachelor of Science in Psychology

College of Arts and Science, South La Union Campus



COLEEN BEATRICE C. CASIANO

9th Placer

Licensure Examination for Psychometricians, November 2018

Bachelor of Science in Psychology

College of Arts and Science, South La Union Campus



MARIA FERNANDA C. ESPENILLA

9th Placer

Licensure Examination for Psychometricians, November 2018

Bachelor of Science in Psychology

College of Arts and Science, South La Union Campus



DONNA S. ESGUERRA

3rd Placer

Licensure Examination for Fisheries Technologists, October 2018

Bachelor of Science in Fisheries

College of Fisheries, South La Union Campus



BENEDIKT A. REGLER

6th Placer

Licensure Examination for Veterinarians, September 2018

Doctor of Veterinary Medicine

College of Veterinary Medicine, North La Union Campus

LAUDABLE ACADEMIC PROGRAMS

The table below shows the ratings of our programs in the licensure examinations. In most of the examinations, DMMMSU keeps ratings higher than those of the national.

LICENSURE EXAMINATION PERFORMANCE

Academic Programs	DMMMSU Passing Rate	National Passing Rate
LET Elementary Education	32.52 %	25.77 %
LET Secondary Education	47.75 %	37.64 %
Agriculture	45.53 %	40.33 %
Midwifery	31.25 %	36.68 %
Nursing	63.64 %	46.93 %
Electrical Engineering	67.54 %	63.68 %
Mechanical Engineering	49.37 %	60.56 %
Master Electrician	69.83 %	57.33 %
Forestry	42.11 %	57.41 %
Agricultural and Biosystems Engineering	52.17 %	46.10 %
Veterinary Medicine	47.83 %	48.40 %
Fisheries Technology	46.30 %	31.83 %
Guidance Counselor	100 %	65.74 %
Psychometrician	47.89 %	59.04 %

For goal 3 which is operational and scientific research program, we aim to increase research productivity, and raise research quality and impact.

As a result,

54 researches were completed,
253 are ongoing, and
254 faculty members were involved in the conduct of researches.

Sixteen percent (16%) of the outputs were published in indexed and reputable journals.

We also have **32** intellectual property registrations:

19 utility models

1 trademark

12 copyrights,

and **61** research presentations in the international, national, and regional fora.

OPERATIONAL AND SCIENTIFIC RESEARCH PROGRAMS

Among the completed researches this year, fourteen (14) research outputs are utilized by the industry or by other beneficiaries.

1. Dog soap
2. Seabon
3. Five (5) industrial (suksuk designs) namely:
 - Victor design
 - Imelda design
 - Binakol wheel type
 - Binakol diamond
 - Mirub2, PRD-2018
4. Chevon products in retort pouch with 4 copyrighted packaging labels and 5 copyrighted flyers
5. Seaweed products
6. Inbred rice



VIBRANT EXTENSION AND COMMUNITY DEVELOPMENT

For vibrant extension and community development programs, we encourage the implementation of research-based extension and community programs which are responsive to national and international goals.

We ensure the sustainability of current extension development programs with increased number of adapters.

We develop strategies to sustain community-based programs for global visibility.

We have **90 partnerships** with LGUs, industries, NGOs, NGAs, SME, and other stakeholders. a

We offered **164 various trainings** and services to **10,503 beneficiaries**.



EFFICIENT AND EFFECTIVE RESOURCE GENERATION

As for efficient and effective resource generation, we aim to maximize the utilization of resources to increase productivity, expand existing IGPs, rationalize incentive scheme to sustain enthusiasm of the personnel concerned.

We also aim to maximize the potentials of the agricultural landholdings of our University to generate more income and to significantly contribute to the PGLU's vision of making La Union the Agri-Tourism Center of the North.

Alipang which used to house the College of Agriculture at Rosario, and which has recently been reacquired from the Carabao Center of the Philippines (CCP) will be transformed into an Agri-Eco Tourism and Technology Business Incubator Center for the College of Agriculture and Sericulture Research and Development Institute (SRDI). Fisheries Research and Training Institute (FRTI) and the proposed Central Administration at Raois Farm will also be converted into Agri-Eco Tourism Center.



EFFICIENT AND EFFECTIVE RESOURCE GENERATION

For FY 2019, DMMMSU received **Php 950,260,000** from the General Appropriations Act. 116M of which was utilized for Capital Outlay.



EFFICIENT AND EFFECTIVE RESOURCE GENERATION



EFFICIENT AND EFFECTIVE RESOURCE GENERATION

DMMMSU was able to externally generate Php 17,171,941.45 and internally generate Php 133,535,015.72.

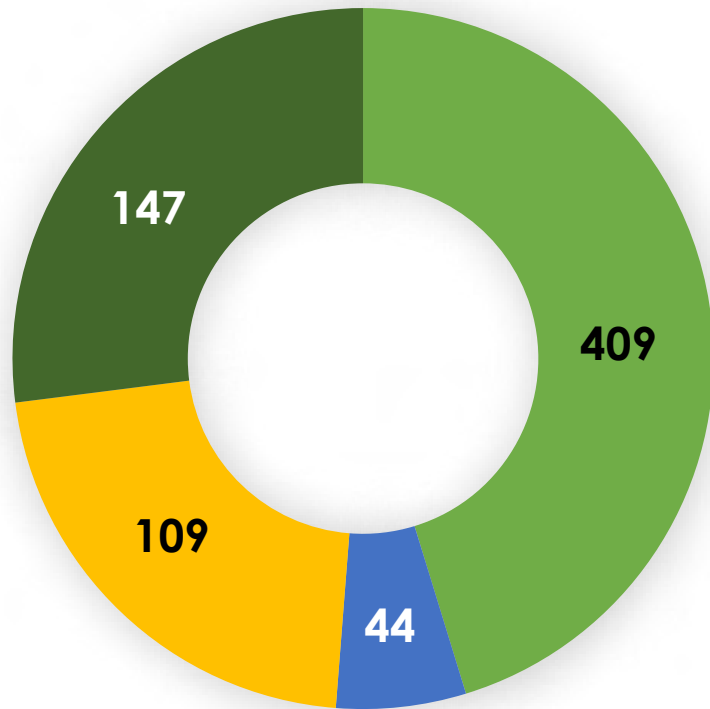


DYNAMIC FACULTY AND STAFF DEVELOPMENT

For dynamic faculty and staff development, we aim to strengthen the Faculty and Staff Development Program to make it more responsive to the needs of the University.

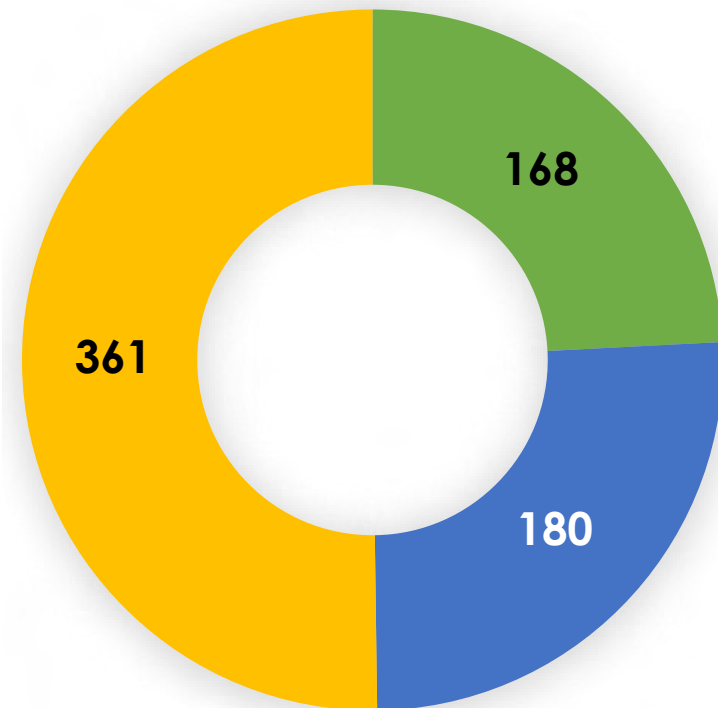
Of the 709 faculty members, 44 are Professors, 109 are Associate Professors, 147 are Assistant Professors, and 409 are Instructors. Moreover, 168 are PhD/EdD holders, 361 are MA/MS degrees, and 180 have BS/BA degree holders.

Profile according to Academic Rank



- Professor
- Associate Professor
- Assistant Professor
- Instructor

Profile according to Degree



- Ph.D./Ed.D.
- MS/MA
- BA/AB

From the Faculty and Staff Development Program, we approved **16 full time scholars**, and **4 partial scholars** and we are encouraging more to enroll in the top 1,000 Universities in the Philippines, or Level 3, or COD/COE Programs in order to strengthen our human resource.

We also have a total of **120 CHED sponsored scholars** and **8 DOST sponsored scholars** who are currently enrolled.





Of the 509 non-teaching staff,
487 are Regular
and **22** are Casual.

DYNAMIC FACULTY AND STAFF DEVELOPMENT

We also supported faculty members and staff in their attendance to **24 international trainings and seminars**, and **155 in the national level**.



MEANINGFUL STUDENT SERVICES AND DEVELOPMENT

DMMMSU has been responsive to the needs of its students. They are provided adequate housing, sports, health, security and food service facilities.

For the past school year, we had a total of **16,167 government and private sponsored scholars**.



MEANINGFUL STUDENT SERVICES AND DEVELOPMENT

DMMMSU provides for indoor and outdoor sports facilities for recreational and competitive sporting events, and to help promote active and healthy lifestyle for both students and employees.



MEANINGFUL STUDENT SERVICES AND DEVELOPMENT

As a result, DMMMSU has been placing 1st Overall Champion in SCUAA-1 for several years now.




MEANINGFUL STUDENT SERVICES AND DEVELOPMENT

The Guidance and Counselling Unit provided 16,018 students with testing, counselling, and placement, services, spiritual enrichment, and job fair activities.



MANIFOLD PHYSICAL RESOURCES AND DEVELOPMENT



To achieve manifold physical resources and development, we aim to prioritize the transfer and titling of land properties and the enactment of Campus Comprehensive Land Use Plan. To accomplish these, we created the Land Transfer and Titling Office (LATTO) which has been responsible for identifying lots titled and tax declared in the name of DMMMSU, and also those titled but not yet declared under the name of DMMMSU.

MANIFOLD PHYSICAL RESOURCES AND DEVELOPMENT

In addition, we wanted to further advance the teaching and learning environment, and to realize this, 10M was allotted for NLUC Library, 8M for the repair of SLUC Library, and 3M for MLUC Library. 3M was the University counterpart of the share amounting to 1.5M given by the Student Body Organization of MLUC.

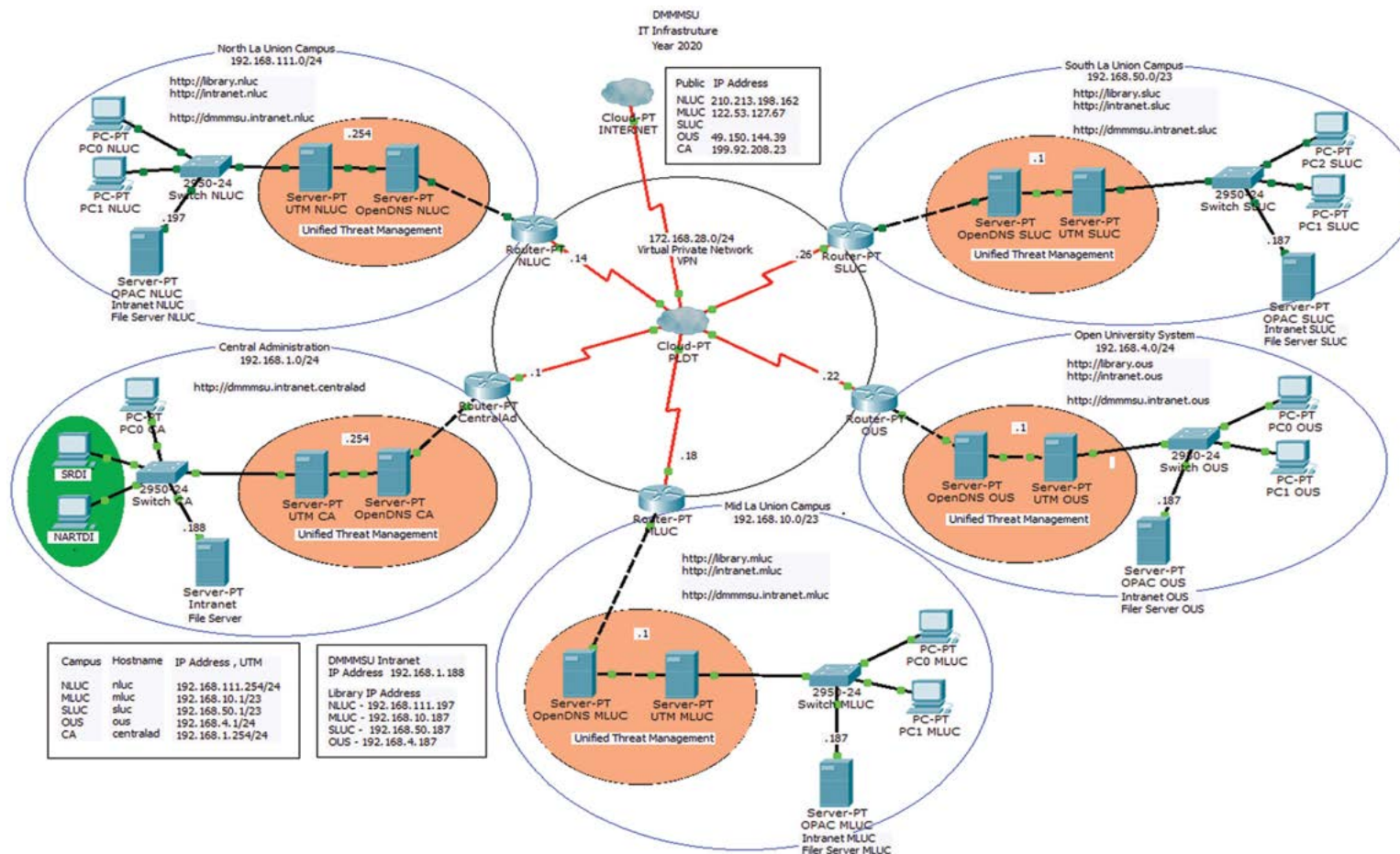


MANIFOLD PHYSICAL RESOURCES AND DEVELOPMENT

Furthermore, in our aim to achieve a highly functional information technology system, we have established 100 percent campus interconnectivity.

In addition, site survey has been conducted at all main campuses for the Fiber Optic Backbone Plan.

As for WIFI ACCESS, MLUC is now wifi campus via Smart Google Station. Google Station Free WiFi has been initiated for NLUC, SLUC, OUS ready for Board Approval. Also, DMMMSU free WiFi which is open to all students has been established in the main campuses.



MORE RESPONSIVE MANAGEMENT AND GOVERNANCE

To further empower operating units and guarantee more participatory management and consultative decision-making, the organization structure was reviewed and rationalized; hence, we now have the Revised Organization Structure (with BOR No. 2019-481) which was approved on March 25, 2019.

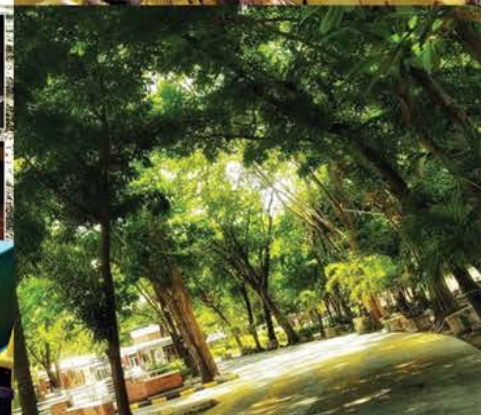
Officials were then carefully selected based on the criteria for designating officials.



MORE RESPONSIVE MANAGEMENT AND GOVERNANCE



DMMMSU conducts climate mitigation activities such as the use of renewable resources, promotion of more sustainable use of land, water and forest, production of growing crops, raising livestock, implementation of effective and efficient material recovery facility, massive clean-up, tree planting, and rainwater harvesting.



DMMMSU has a dynamic and functional office of internationalization and global networks.

HOME-BASED INTERNATIONALIZATION

For our home-based internationalization, particularly on virtual student mobility, 26 students from various countries, namely, Saudi Arabia, Qata, Canada, Cambodia, USA, Japan, and Thailand, enrolled in the various programs of our Open University System



We accommodated 45 inbound students from South Korea and Indonesia.



And we also accommodated Ten Grade-10 students for International Training Cum Cultural/Heritage Tour.

CROSS-BORDER MOBILITY

For our cross-border mobility, we sent 124 outbound students to various partner Higher Education Institutions abroad.



124 Outbound Students

Thailand
Indonesia
Japan
Israel
Malaysia

WELL-SUSTAINED LINKAGES AND COLLABORATION BOTH IN THE LOCAL AND GLOBAL ARENA

Forty-five (45) inbound students were accommodated. Ten (10) Grade 10 students stayed for International Training Cum Cultural/Heritage Tour. Seven (7) faculty members were sent for research and academic exchange abroad.

- **Asian Association of Open Universities**
- **Association of Universities in Asia Pacific**
- **Southeast Asian Ministers of Education Organization**
- **UN International Sericulture Commission**
- **Canadian Executive Service Organization**

Eighteen (18) bilateral agreements with partners abroad were forged.

PARTNER HEI/ORGANIZATION	COUNTRY
Prabhassorn Vidhaya School	Thailand
Rajabhat Maha Sarakham University	Thailand
Olympus Global Company Limited	Vietnam
Universitas Jambi	Indonesia
Association of Universities in Asia Pacific	China
Thai Tech Group	Thailand
SEA TVET China	China
Olympus Global	Vietnam
Duy Tan University	Vietnam
Hoa Sen University	Vietnam
Nichiigikan, Co. Ltd.	Japan
Korea International Cooperation Agency	South Korea
CHED- Canadian Bureau of International Education	Canada
Damronggratsongkroh School	Thailand
Chiang Rai School	Thailand
Watnairong School	Thailand
Politeknik Negeri Pontianak	Indonesia
Universitas Sarjanawiyata Tamansiswa	Indonesia

UNIFIED, STRONG, COLLABORATIVE AND SUPPORTIVE ALUMNI

For a unified, strong, collaborative and supportive alumni, we aim to establish both local and international alumni networks. For this school year, the following were accomplished:

- Strengthened the alumni relations through a functional Alumni Relations Office
- Drafted the Alumni Relations Office Operations Manual
- Conducted alumni homecomings in campuses and colleges
- Traced 50 percent of our alumni
- Collaborated with Jobs180.com to create a university alumni portal



Hon. J. Prospero E. De Vera III

Chairperson, CHED/Presiding Officer, DMMMSU BOR

Dr. Jaime I. Manuel, Jr.

President, DMMMSU Vice Chair

Hon. Emmanuel Joel J. Villanueva

Chairperson Senate Committee on Education, Arts and Culture, Member

Hon. Mark O. Go

Represented by:

Hon. Francisco Paolo C. Ortega V

Chairperson House Committee on Higher and Technical Education, Member

Hon. Nestor G. Rillon

Regional Director National Economic and Development Authority – RO1, Member

Hon. Lucrecio R. Alviar, Jr.

Regional Executive Director Department of Agriculture – RO1, Member

Hon. Armando Q. Ganal

Regional Director Department of Science and Technology – RO1, Member

Hon. Mari Grace S. Gallano

Representative, Private Sector, Member

Hon. Pancracio Q. Nisce

Representative, Private Sector, Member

Hon. Mario Eduardo C. Ortega

President, Alumni Association, Member

Hon. Jo Ann P. Rulla

Director, National Apiculture Research, Training & Development Institute President, Faculty Association of DMMMSU, Member

Hon. Judy Ann J. Hidalgo

President, University Student Council, Member

Dr. Rogelio T. Galera, Jr.

Director IV Commission on Higher Education – Region 1, Resource Person

Dr. Antonio O. Ogbinar

University and Board Secretary

UNIVERSITY OFFICIALS

Dr. Jaime I. Manuel, Jr.
President

Dr. Estrella N. Perez
Vice President, Administration

Dr. Honorio C. Buccat
Vice President, Academic Affairs

Dr. Cynthia M. Rodriguez
Vice President, Research and Extension

Dr. Gil F. dela Vega
Vice President, Planning and Resource Development

Dr. Antonio O. Ogbinar
University and Board Secretary

Dr. Junifer Rey E. Tabafunda
Chancellor, North La Union Campus

Dr. Eduardo C. Corpuz
Chancellor, Mid La Union Campus

Dr. Floribeth P. Cuison
Chancellor, South La Union Campus

Dr. Joanne C. Rivera
Director, Open University System

Dr. Antonio E. Madrid
Director, National Apiculture Research, Training
and Development Institute

Dr. Cristeta F. Gapuz
Director, Sericulture Research and Development Institute

Dr. Elsie M. Pacho
Director, Instruction

Dr. Joanne C. Rivera
Director, Internationalization and Linkages

Dr. Jo-Anne D. Villar
Director, National Service Training Program

Dr. Shalimar L. Navalta
Director, Student Affairs and Services

Dr. Valoree B. Salamanca
Director, Admission and Record

Ms. Liceria G. Enteria
Director, Library Services and Development

Prof. Irene N. Gomez
Director, Cultural Affairs

Prof. Paulo Jan F. Samson
Director, Sports Development

Prof. Delia M. Imperial
Director, Alumni Affairs

Dr. Stephan Kupsch
Director, Management Information Systems

Dr. Melchor D. Salom
Director, Business Affairs

Dr. Lilito D. Gavina
Director, Planning and Development

Ms. Perla A. Sotelo
Director, Resource Development and GAD Focal Person

Prof. Keneth G. Bayani
Director, Research

Dr. Eladio E. Camalig, Jr.
Director, Extension

Atty. Kristine Gay B. Balanag
Director, Administrative Services

Dr. Angelita J. Prado
Director, Quality Assurance

Dr. Maria Consuelo W. Alcantara
Director, Medical Services

Prof. Ruben P. Dacayanan
Director, Auxiliary Services

Ms. Placida E. de Guzman
Director, Finance

Mr. Dexter P. Licay
Chief Accountant

Dr. Cythia C. Sampaga
University Human Resource Management Officer

Hail, beloved Alma Mater
 Don Mariano Marcos Memorial State University
 Your honored name will shine forever
 Keep your glorious fame resounding far and near.
 From thy portals we learn
 Skills unknown before
 And heads and hands keep on craving for more
 Oh hail, beloved institution
 Never shall we stand forlorn
 From you a new era is born
 To keep life smoothly moving on.
 You are our inspiration
 In our quest for knowledge and wisdom
 You fulfill a noble mission
 In instruction, research and extension
 You give the best solution
 In transforming our land into a great nation
 And though the years may come and go
 Our love for you will grow
 Beloved University
 We are proud of you.
 We are proud of you.



PHILOSOPHY

Total human development with appropriate competencies.

Naan-anay a pannakamuli ti tao iti umiso ken nadumaduma a kabaelan.

VISION

A globally competitive university.

Kangrunaan ken mabigbigbig nga universidad iti sangalubungan.

MISSION

Provides high quality instruction, research and extension.

Mangipaay iti maiyanatup ken dekalidad a panagisuro, panagsukisok ken ekstensiyon.

GOAL

To lead in transforming human resources into productive, self-reliant citizens and responsible leaders.

Mangidaulo iti pannakatubay dagiti tao a managparnuay, makapagwaywayas ken nanakman a mangidalan.



<http://www.dmmmsu.edu.ph>



dmmmsu@dmmmsu.edu.ph



(072 682 2596)



@DMMMSUEduPh



@DMMMSUEduPh

